

### The Waste Water System

Your grey water (shower, basin and sink runoff) waste bin is black and can be found in a bin between the seats inside your caravan. It should be set up on the exterior of your caravan by connecting the waste water tube to the connection on your caravan. To do this, first release the camelot valve handles on either side of the caravan connection plug by pulling them forward and removing the travelling plug from the socket attached to the caravan. Second, insert the connection on the flexible end of the waste tube into the caravan connection and secure the camelot valve handles by pressing them backwards, thus locking the flexible tube in place.



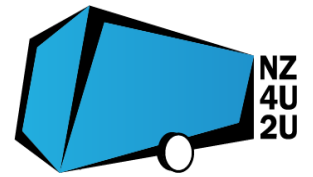
Ensure the red tap on the waste bin and the red tap on the caravan connection are open ie running in the same direction as the hose. There is a small breather pipe which acts as a air release valve on your waste bin. Ensure the cap on the end of this is removed to allow air to escape as the tank fills. The cap should be returned for travel if there are contents in the bin, to prevent leakage.

Ensure your tank is rinsed out on the return of your caravan. There is a fee for cleaning out a soiled waste tank.

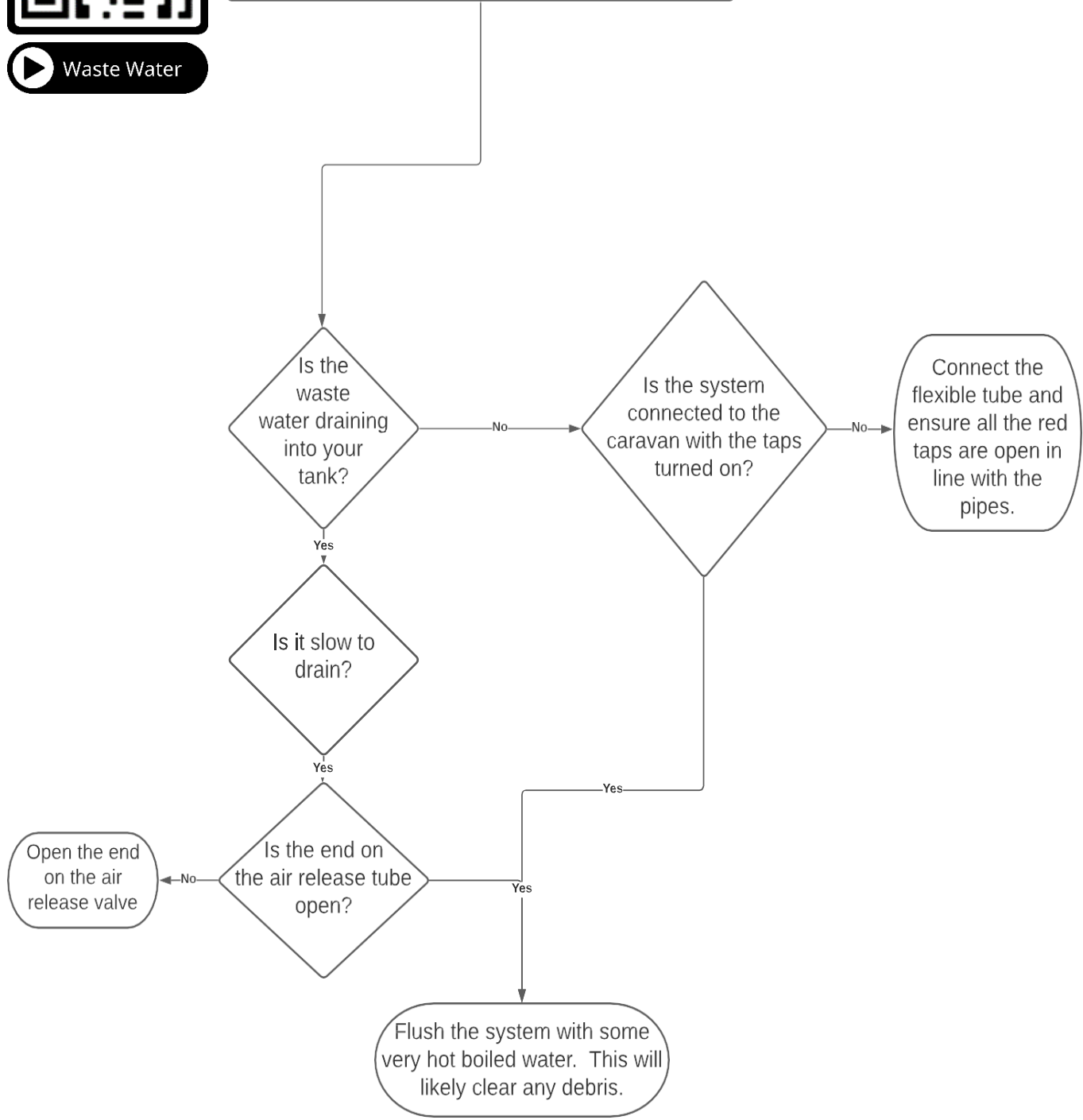
It is important to note the waste pipes on the caravan are small and the caravan is largely flat along the base so there is not much head pressure or gravity fall in the waste system. This can make the waste water slow to drain. Don't be alarmed. This is normal. In fact, sometimes the caravan will be parked in such a manner that the waste water might even be running uphill to get into the tank. If you are concerned, you can tip a jug of boiling hot water down the drain to clear any debris the system may have collected while travelling.



▶ Waste Water



The waste water system does not seem to be working



The pipes are small and their is little head pressure and no gradient along the bottom of the caravan. The drains are naturally slow to drain. This might be the best that you can do. Call us 0220 694828 if you have further concerns.