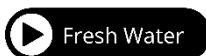




The Fresh Water System



Your water tank will be located between the lounge seats, and the water pump will be in the sink. You will need to fill the water tank from a clean filtered water source free from debris. Any sand or grit in the water can become lodged in the water system causing blockages which in turn will cause your pump to fault and/or a malfunction of the sensitive pressure valve. Connect the submersible water pump head to the inlet on the caravan, dropping the submersible water pump end of the pump into the water container. Be sure to lift the shield on the caravan slotting it down over the pump head in place.

Water inlet shield

submersible water pump

handle connection point

water tank

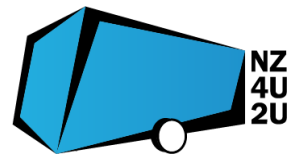


Once you have connected your water, turn on the water pump switch (tap icon) located on the 12 volt master control panel inside the front door. Your pump should never be left to run without water in the tank or it will burn out and need replacing. Be especially careful to turn off the tap in the shower if you run out of water.

Your water barrel has a handle, which makes it easy to roll. To connect the handle stretch the handle over the connection points on each end of the water tank. There are also water chocks supplied and you are required to use these if you are travelling with water in your water barrel because the barrel is heavy and if it rolls around while travelling and can cause damage to the caravan.

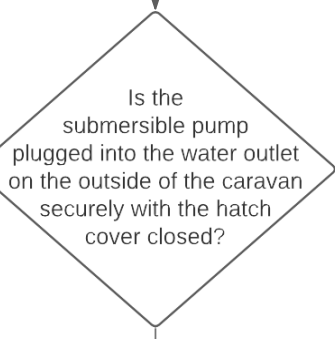
Take care not to attempt to disconnect the pump head connection from the caravan by pulling it using the hose. If you do so you will likely just break the hose clip and disengage the hose from the pump head connection. We have taped our pumps head connections to the hose as a reminder to use the pump head connection to disengage the pump.

If you are close to a tap supply of water (15m) and do not wish to keep refilling your tank you can use a special water adapter that allows you to plug via a hose directly into a tap. These can be purchased from a caravan and camping supply store or hired from us.

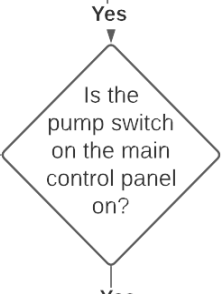


There is no fresh water in my caravan

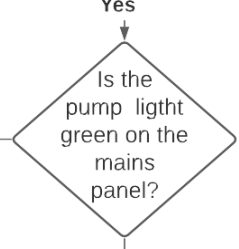
Plug the submersible pump located in the sink into the external water outlet on the caravan. If the pump has a square head ensure the hatch cover is sitting down slightly over the top of the pump head. Drop the submersible pump into the water tank



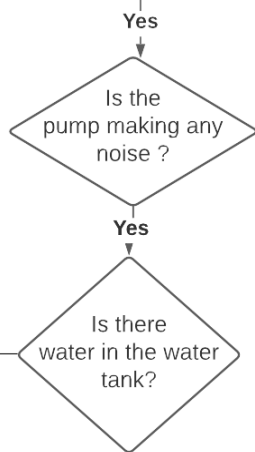
Turn the pump switch on



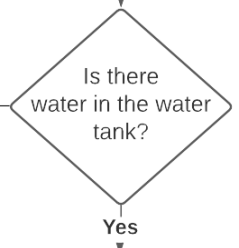
Check the pump blade fuse in the fuse box under the lounge seat



Fill the water tank



Fresh Water



It is likely your pump may be burnt out. This can happen if the tank has run out of water or if grit has become lodged in the pump

It is likely the hose clip from connecting your hose to the hose head has become loose

Replace the pump with the spare pump under the lounge seat. Text us to advise us 0220 69 4828