



Your Truma heating and hot water system. Call 0220 694828 if you need help.

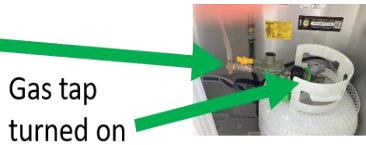
Please ensure you turn on the 12 volt master switch (it is located by the door and will look like this image) **before** you attempt to turn on the Truma heating and hot water system.



Please ensure you connect and turn on the gas bottle or connect the electricity **before** you attempt to turn on your Truma heating and hot water systems. Ensure your gas bottle is connected correctly with the gas tap in the open position and the yellow toggle open in line with the gas supply hose. If you do not your system will produce an error code which will need to be cleared before the system will operate. (see below to clear an error code). If gas is still not coming through check the gas taps under the sink. are in the horizontal position. An easy test to see if you have gas flow is to turn on the hobs (remember to hold down and turn the temperature setting and the ignitor at the same time).

If you do not your system will produce an error code which will need to be

Yellow toggle in line with gas pipe



Gas tap turned on

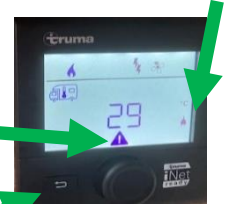


Gas taps horizontal

cleared before the system will operate. (see below to clear an error code). If gas is still not coming through check the gas taps under the sink. are in the horizontal position. An easy test to see if you have gas flow is to turn on the hobs (remember to hold down and turn the temperature setting and the ignitor at the same time).

Always turn the heating and hot water settings on the Truma Control Panel to off **before** disconnecting your power source.

Truma control panel error warnings. If you have a warning triangle (see image) rotate the dial and select the triangle to identify the error.

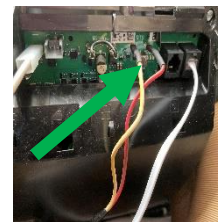
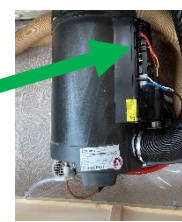
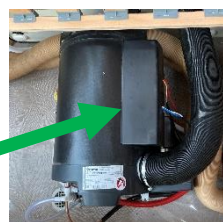


Error code E517H. This means the heating system was turned on before the gas bottle was connected. Please select the back button and set the heating and hot water systems to off which will clear the error. Connect your gas bottle and ensure the gas tap is open. Use your control panel dial to rotate to the 3rd icon and select the source (GAS) and then select the heating (1st icon) and hot water (2nd icon) and turn these on. Note sometimes the caravan is plugged into electricity but gas has been selected as the source (3rd icon). A gas error will result because the system is trying to use gas even though the caravan might be plugged into electricity.

Error Code E407H. As above except the heating system was turned on before the caravan was connected to an operating 230 volt electrical source. Clear the error by turning the heating and hot water systems off. Ensure the caravan is plugged into an operational electrical connection and turn your heating and hot water system back on ensuring you select EL2 as the source (3rd icon). If the caravan recognises an 230 volt electrical supply a plug icon will be displayed on the right hand side of the control panel (see image). If the error code is blinking then the caravan has entered lock out mode. See below to clear lockouts replacing gas with electricity in the example provided.

Error code W255H. This means the master switch has been switched off. Please turn the vehicle master switch on (located by the door) and then the error code will disappear.

Lockout. If the error code is blinking this means your system has entered the lock out mode. For example a blinking E517H happens if you have tried to start the system 4 times without a suitable gas supply. The 3rd icon must be set to gas to clear this lockout. Truma advice says to turn off your heating and hot water systems and wait 15 minutes before connecting the gas and trying again. This is supposed to clear the lock out. Unfortunately our experience is that often 15 mins is not long enough, and the lockout does not clear. If this is the case you will need to do a hard reset while the error code is flashing on the Truma control panel. This involves sliding upwards the cover on the heating unit (which can be found under the front lounge seat) to expose the working panel. Locating and pressing the manual reset toggle (see far right image for location) for 5 seconds until the lights turn amber.



System Reset. The system has a reset button this is in the lower right corner and looks like a spanner. You shouldn't need to use this and it will not fix a lockout (that must be cleared as described above) but in extreme cases it can sort a problem. It is a bit like CTRL ALT DELETE on your computer. Select this reset cog, rotate until you get RESET - PR SET - select this and leave you panel for a few minutes it will say INIT. You must have at least one power source connected or your system will not activate with any of the menu options available. If the system does not display the normal menu items check you have at least activated a gas source and complete another reset.



No Electricity. The lights are working but there appears to be no electricity. Your lights will operate without electricity as they run off the battery. Look at the heating control panel it will show a symbol of an electrical plug on the right hand side if your system detects an electrical source. You can also test by plugging in a jug or toaster and checking to see if they operate. If you still do not have electricity check you cable is correctly connected into your caravan and plugged correctly into the source. Check the fuses under the seat are in the upright position. If you still do not have electricity you will

need to test the power source as often this is the problem.

Turning the system off. The system can be turned off and on by pushing the round knob on the control panel and holding it for 3 seconds.

We love our caravans but they are fragile. Please take care of them as you would your own.